

Ricercar Quinto

Ricercar Quinto (Cantus)

Adrian Willaert (c.1490 - 1562)

Fantasia Recercari Contrapunti à 3 (1559)

① 2 3

Cantus

5 10

15

20

25

30 #

35

40

45

50

55

60

65

70

Ricercar Quinto (Cantus)

Musical score for Ricercar Quinto (Cantus), starting at measure 75. The score is written in treble clef with a key signature of one flat (B-flat). The music consists of a single melodic line with various rhythmic values including quarter, eighth, and sixteenth notes, as well as rests. Measure numbers are indicated in boxes above the staff: 75, 80, 85, 90, 95, 100, 105, 110, 115, 120, 125, 130, 135, 140, and 145. A repeat sign is present at measure 125. A first ending bracket covers measures 140-144, and a second ending bracket covers measures 144-145. The piece concludes with a double bar line and a sharp sign (#) on the final note.

Ricercar Quinto (Tenor)

The image shows a musical score for the Tenor part of a Ricercar Quinto. It consists of ten staves of music, each starting with a treble clef and a key signature of one flat (B-flat). The music is written in a style characteristic of the early 17th-century Italian lute repertoire. The score includes various rhythmic values such as minims, crotchets, and quavers, along with rests. Measure numbers are indicated in small boxes above the staff lines: 80, 85, 90, 95, 100, 105, 110, 115, 120, 125, 130, 135, 140, and 145. A repeat sign is present at measure 115, and a first/second ending bracket is shown above measures 140 and 141. A sharp sign (#) appears above measure 125, indicating a key signature change to two flats (B-flat and E-flat). The piece concludes with a double bar line at measure 145.

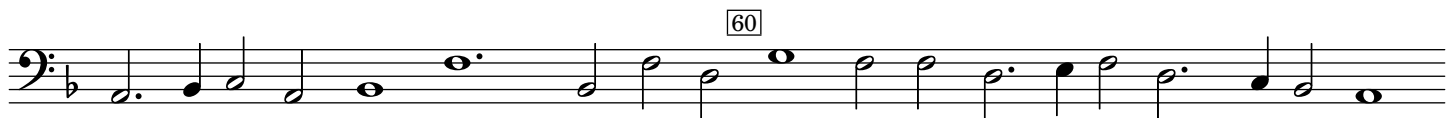
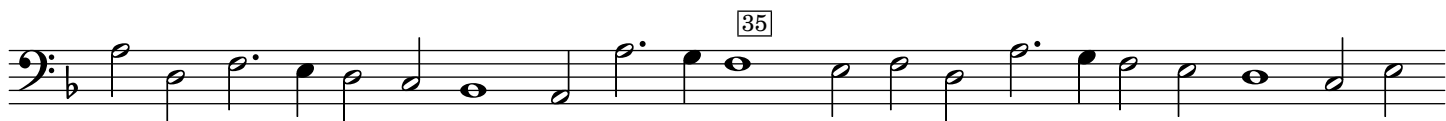
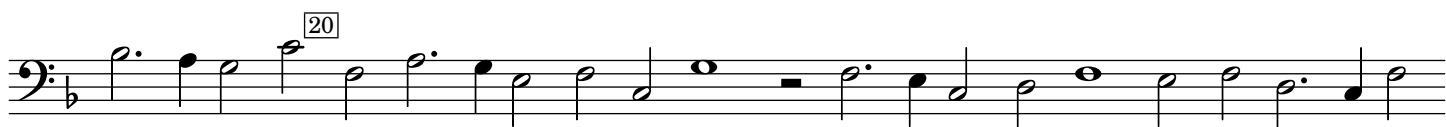
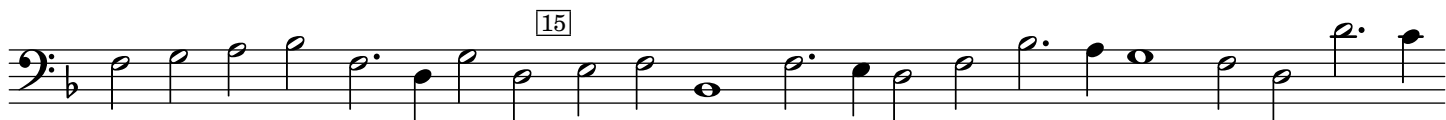
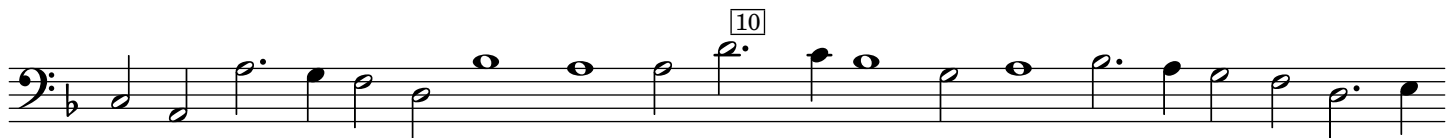
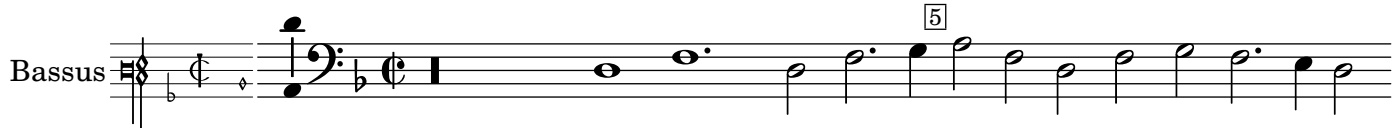
Ricercar Quinto

Ricercar Quinto (Bassus)

Adrian Willaert (c.1490 - 1562)

Fantasia Recercari Contrapunti à 3 (1559)

1 2 ③



Musical score for Ricercar Quinto (Bassus), measures 75 to 145. The score is written in bass clef with a key signature of one flat (B-flat). The notation includes various note values (quarter, eighth, and sixteenth notes), rests, and dynamic markings. Measure numbers are indicated in boxes above the staff lines. The score concludes with a first ending (1.) and a second ending (2.) leading to the final measure.

Ricercar Quinto

Adrian Willaert (c.1490 - 1562)

The image displays a musical score for 'Ricercar Quinto' by Adrian Willaert. The score is arranged in three systems, each containing three staves: Canto (top), Tenor (middle), and Bass (bottom). The music is written in a single system with a common time signature (C) and a key signature of one flat (B-flat). Measure numbers are indicated in boxes above the Canto staff at intervals of 5 measures, starting from 5 and ending at 60. The notation includes various rhythmic values such as minims, crotchets, and quavers, along with rests and dynamic markings like '8' and '7'. The score is presented in a clean, black-and-white format.

65 70

This system contains measures 65 to 70. The treble clef staff begins with a whole rest at measure 65, followed by a series of eighth and sixteenth notes. The alto clef staff provides a harmonic accompaniment with dotted and eighth notes. The bass clef staff features a steady eighth-note accompaniment. A key signature change to one flat is indicated by a 'b' symbol above the treble staff at measure 69.

75 80

This system contains measures 75 to 80. The treble clef staff continues with eighth and sixteenth notes. The alto clef staff has a more active line with dotted rhythms. The bass clef staff maintains the eighth-note accompaniment. A key signature change to two flats is indicated by a 'b' symbol above the treble staff at measure 79.

85 90

This system contains measures 85 to 90. The treble clef staff features a melodic line with some rests. The alto clef staff has a more active line with dotted rhythms. The bass clef staff maintains the eighth-note accompaniment.

95

This system contains measures 95 to 100. The treble clef staff features a melodic line with some rests. The alto clef staff has a more active line with dotted rhythms. The bass clef staff maintains the eighth-note accompaniment.

100

This system contains measures 100 to 105. The treble clef staff features a melodic line with some rests. The alto clef staff has a more active line with dotted rhythms. The bass clef staff maintains the eighth-note accompaniment.

105 110

This system contains measures 105 to 110. The treble clef staff features a melodic line with some rests. The alto clef staff has a more active line with dotted rhythms. The bass clef staff maintains the eighth-note accompaniment. A key signature change to one sharp is indicated by a '#' symbol above the treble staff at measure 109.

115

Musical score system 1, measures 115-119. The system consists of three staves: Treble, Alto, and Bass. Measure 115 is marked with a box containing the number 115. A sharp sign (#) is placed above the staff at the beginning of measure 117. The music is in a minor key and features a complex rhythmic pattern with many sixteenth notes.

120

125

Musical score system 2, measures 120-124. The system consists of three staves: Treble, Alto, and Bass. Measure 120 is marked with a box containing the number 120. Measure 125 is marked with a box containing the number 125. A sharp sign (#) is placed above the staff at the beginning of measure 123. The music continues with a complex rhythmic pattern.

130

Musical score system 3, measures 130-134. The system consists of three staves: Treble, Alto, and Bass. Measure 130 is marked with a box containing the number 130. The music continues with a complex rhythmic pattern.

135

Musical score system 4, measures 135-139. The system consists of three staves: Treble, Alto, and Bass. Measure 135 is marked with a box containing the number 135. The music continues with a complex rhythmic pattern.

140

145

1 2

Musical score system 5, measures 140-144. The system consists of three staves: Treble, Alto, and Bass. Measure 140 is marked with a box containing the number 140. Measure 145 is marked with a box containing the number 145. Above the staff, there are two first endings marked with '1' and '2'. The music concludes with a double bar line and a sharp sign (#) above the staff.