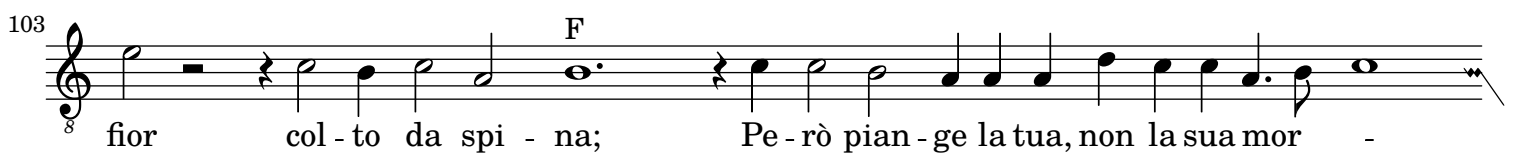
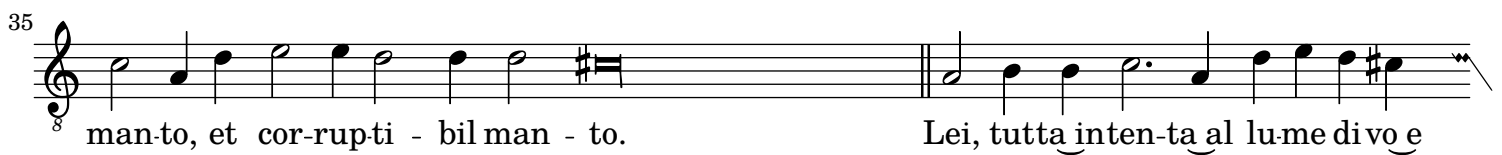
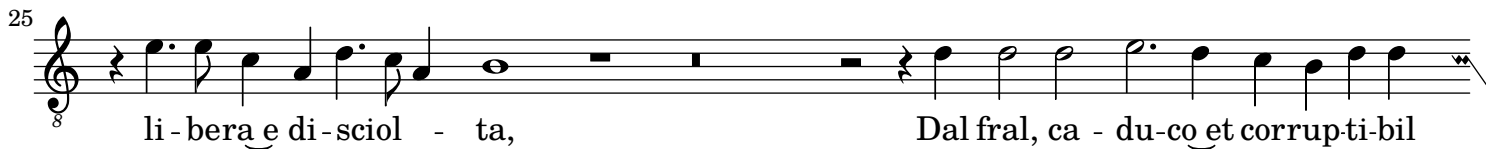


Alto

1 ② 3 4 5



Alto

2

112

8 te, Però pian - ge la tua, non la sua mor - te, Che morte è quella che si chiama

Detailed description: This musical staff contains measures 112 through 120. It begins with a treble clef and a common time signature. The melody starts with a quarter note G4, followed by quarter notes A4, B4, and C5. There is a fermata over the C5 note. The melody continues with quarter notes B4, A4, G4, F4, E4, D4, C4, and B3. A measure rest follows. The staff concludes with quarter notes A3, G3, F3, E3, D3, C3, and B2, ending with a fermata.

121

8 vi-ta, Che morte è quella che si chiama vi - ta, che si chiama vi - ta.

Detailed description: This musical staff contains measures 121 through 128. It begins with a treble clef and a common time signature. The melody starts with quarter notes G4, A4, B4, and C5. There is a fermata over the C5 note. The melody continues with quarter notes B4, A4, G4, F4, E4, D4, C4, and B3. A measure rest follows. The staff concludes with quarter notes A3, G3, F3, E3, D3, C3, and B2, ending with a fermata.