

Tota pulchra es

Ad pares.

Discantus

(loosely) Song of Solomon, 4:7

Sixtus Dietrich

from Rhau, Tricinia, 1542, VII.

① 2 3

12 To - ta pul - chra

12 es, To - ta pul - - - chra es a -

25 mi - ca me - - - a a - mi - ca me - a, me -

37 - - a Et ma - cu - la non est, in

50 te, et ma - cu - la non est in te,

64 non est in te, non est in te, for -

77 mo - sa me - - - a di - le -

89 - cta me - a co - lum - ba me - - - a.

Translation:

Tota pulchra es amica mea
 Et macula non est in te
 formosa mea
 dilecta mea
 columba mea.

You are altogether beautiful, my love;
 there is no flaw in you
 my beauty,
 my delight,
 my dove.

Loosely taken from the Song of Solomon 4:7.



Tota pulchra es

Ad pares.

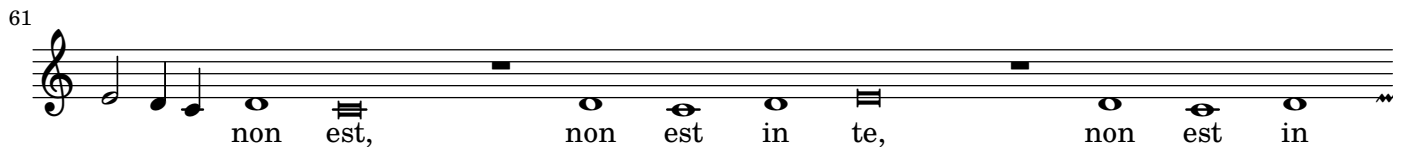
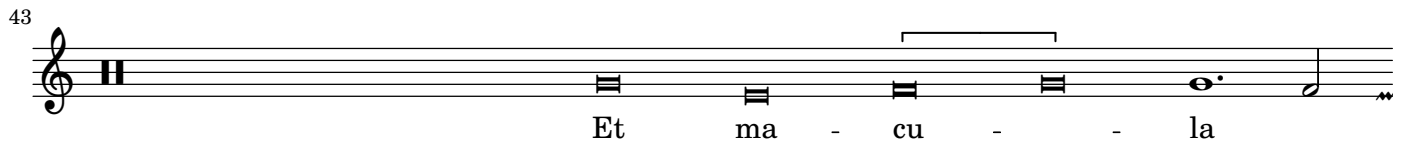
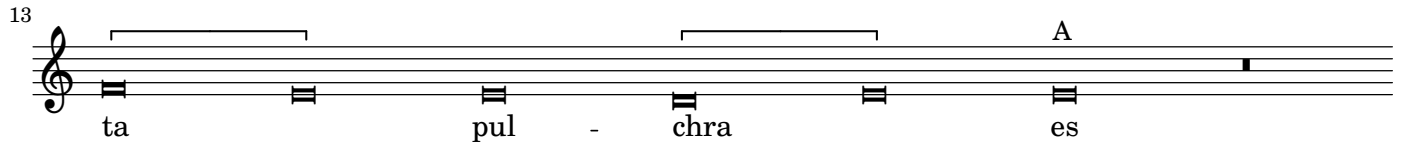
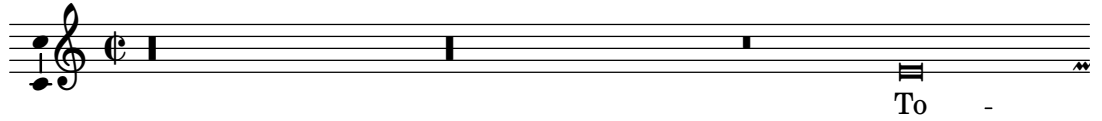
Tenor

(loosely) Song of Solomon, 4:7

Sixtus Dietrich

from Rhau, Tricinia, 1542, VII.

1 ② 3



” Translation:

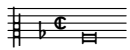
Tota pulchra es amica mea
Et macula non est in te
formosa mea
dilecta mea
columba mea.

You are altogether beautiful, my love;
there is no flaw in you
my beauty,
my delight,
my dove.

Loosely taken from the Song of Solomon 4:7.

¹Tied note is editorial.

²Original has a b here, but it's an awful crunch with the a in the discantus. The f in the bassus supports having c or a here.



Tota pulchra es

Ad pares.

Bassus

(loosely) Song of Solomon, 4:7

Sixtus Dietrich

from Rhau, Tricinia, 1542, VII.

1 2 ③

To - ta pul - - - chra

es a - mi - ca me -

- - - a a - mi - ca me - -

- a Et ma - cu - la non est, in

te, non est in te

non est in te et ma - cu - la non est in te for -

mo - sa me - - - a di - le - cta me -

- a co - lum - ba me - - - a.

Translation:

Tota pulchra es amica mea
 Et macula non est in te
 formosa mea
 dilecta mea
 columba mea.

You are altogether beautiful, my love;
 there is no flaw in you
 my beauty,
 my delight,
 my dove.

Loosely taken from the Song of Solomon 4:7.

Tota pulchra es

Ad pares.

(loosely) Song of Solomon, 4:7

Sixtus Dietrich

from Rhau, Tricinia, 1542, VII.

To - ta pul - - chra es, To - ta
To - ta pul - - chra es
16 pul - - chra es a - mi - ca me - -
pul - - chra es
a - mi - ca me - -
31 a a - mi - ca me - a, me - - a Et ma - cu - la
a - - mi - ca me - - - a
a - mi - ca me - - - a Et ma - cu - la
46 non est, in te, et ma - cu - la non est in
Et ma - - cu - - la
non est, in te, non

61

te, non est in te, non est in
 non est, non est in te, non est in
 est in te non est in te et ma-cu - la non est in

75

C
 te, for - mo - sa me - - - - a di - le -
 C
 te for - mo - sa me
 C
 te for - mo - sa me - - - - a di - le - cta

89

- cta me - a co - lum - ba me - - - - a.
 (2) # (1)
 a co - lum - ba me - - a.
 me - - a co - lum - ba me - - - - a.