



# Fantasia: La Rondinella:

## CANTUS

Thomas Morley.

8

16 A

22

29 B

35

40 (1)

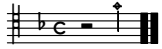
46

53 (2)

60

<sup>1</sup> original has F2, quarter note.

<sup>2</sup>Facsimile has Bb.



# Fantasia: La Rondinella:

TENOR.

Thomas Morley.

8

15 A

22

29 B

35

40

46

53

60

# Fantasia: La Rondinella:

Thomas Morley.

The image displays a musical score for 'Fantasia: La Rondinella' by Thomas Morley. The score is written for two staves, likely representing a vocal line and a lute accompaniment. The key signature is one flat (B-flat), and the time signature is common time (C). The music begins with a whole rest on the first staff, followed by a series of eighth and sixteenth notes. The score is divided into several systems, with section markers 'A' and 'B' indicating specific points in the piece. The notation includes various note values, rests, and accidentals, such as sharps and naturals. The overall style is characteristic of the English Madrigal school.





---

<sup>1</sup>Facsimile has half note followed by quarter note.  
<sup>2</sup>Facsimile has Bb.