



# La Girandola

## CANTUS

Thomas Morley.

8

15 A

22

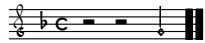
27 B

33

39 C

45

50



# La Girandola

TENOR.

Thomas Morley.

9

15

20 A

26 B

32

39 C

45

50

# La Girandola

Thomas Morley.

The image displays a musical score for the piece "La Girandola" by Thomas Morley. The score is written for two staves, both in treble clef, with a key signature of one flat (B-flat) and a common time signature (C). The music consists of several measures, with various note values including quarter, eighth, and sixteenth notes, as well as rests. Section markers 'A' and 'B' are placed above the staves to indicate specific parts of the composition. The notation includes accidentals such as sharps and flats, and the overall style is characteristic of early 16th-century English lute music.

The image displays a page of musical notation for guitar, consisting of 14 staves. The notation includes treble clefs, a key signature of one flat (B-flat), and a common time signature (C). The music features a variety of rhythmic patterns, including eighth and sixteenth notes, and rests. The piece concludes with a double bar line and a fermata over the final notes on the bottom two staves.