

BASSVS.



Deep lamenting, grieffe be-wray - ing; grief bewraying; Poore A-min-



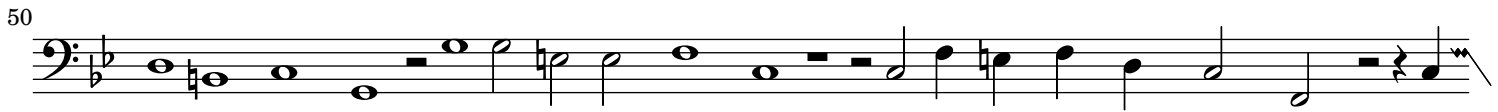
tas thus satt say-ing. Glut now, now glut thine eyes, glut now, now glut thine eies, while



I lye dying; kild with disdain, a-las, and pittie crying, pit-ty crying. Now, now maist thou



laugh full me-ri-ly; for dead lo is the man, dead is thy mortal en-i-my. O no,



no, no weep not; O no, no, no, weep not; I can not bide this blindnesse; I



can not bide this blindnesse; this blind-nesse; All too late, all to late now; all to late



all to late, all to late now god wot, to late comes this your kind-nes. But if you



would that death should, that death should of lyfe de-prise mee: weep not a-



las, weep not least you a - gaine revive mee, weep not least you a-gaine re-



vive mee. least you there-by re-vive mee; Ah cease, ah cease to bewaile, ah



cease to bewaile mee; my life, my life now doth faile, my life now doth fayle mee.