

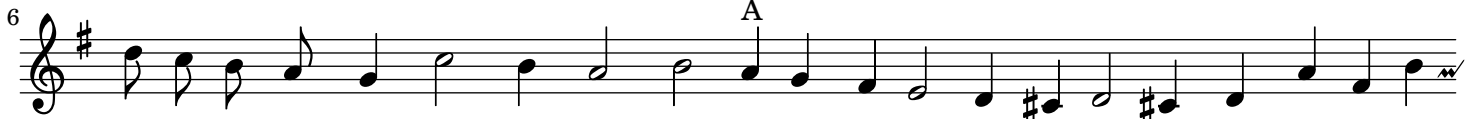
III. Cruel, you pul away to soone

Cantus

Thomas Morley



Cru- el, you pul a- way to soone your lips, your dain- ty lips, cru- ell, you



pull a- way too soone, too too soone your lips when as you kisse mee, cru- el, you



pul a- way to soone your lips, your dain- tie lips, cru- ell, you pul a- way to soone, you



pull a- way to soone your dain- tie lips when as you kisse, you kisse me,



But you should hould them still, (O) but you should hould them still, but



you should hold them still, and then, then should you blisse mee, Now or eare I



tast them, strait a- way they hast them, or eare I tast them, a- way they hast



them, But you per- haps re- tire them, to move my thoughts ther- by



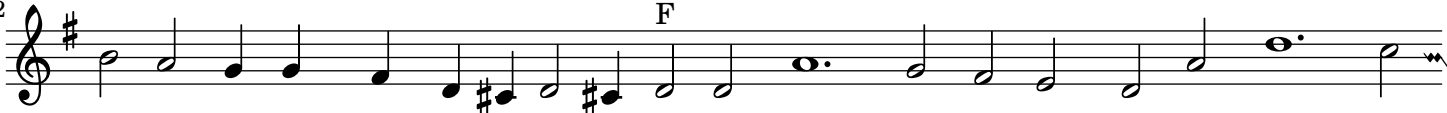
the more to fyre them. A- las, a- las such baits, such bayts





you need to fynd, you need to find out ne- ver: if you wold let




mee, if you wold let mee, you would let mee, if you would let mee, if you would

62  F
 let mee I would kisse you e- ver. A- las, a- las such bayts, a- las, a-

72  G
 las such baits you need to finde out ne- ver, if you wold let mee, if you wold let

79 
 me, if you wold let mee, if you would let mee, (you should not feare if) you would

85 
 let mee I would kisse kisse, and kisse, and kisse, kisse, and kisse, and kisse you e- ver.