

(Number 38 from *Primo Libro a due voci*)

Cantus

Lupacchino

① 2

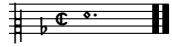
12

20

30

38

46



(Number 38 from *Primo Libro a due voci*)

Tenor

Lupacchino

1 ②

9

18

28

37

46

(Number 38 from *Primo Libro a due voci*)

Lupacchino

The image displays a musical score for two voices, arranged in two systems of two staves each. The music is in G minor (one flat) and 3/4 time. The notation includes various note values such as quarter, eighth, and sixteenth notes, as well as rests. The piece concludes with a double bar line and repeat dots at the end of each staff in both systems.