



56. Almaine.

CANTVS.

Antony Holborne

15

29

43

56. Almaine.

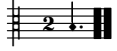
ALTUS.

Antony Holborne

15

29

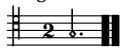
43



56. Almaine.

QUINTUS.

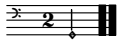
Antony Holborne



56. Almaine.

TENOR.

Antony Holborne



56. Almaine.

BASSVS.

Antony Holborne

18

37

56. Almaine.

Antony Holborne

The musical score for 'Almaine' by Antony Holborne is presented in a system of 14 staves. The first four staves are grouped together, as are the last four staves. The middle four staves are separated from the others by a double bar line with repeat dots. The music is written in a 3/4 time signature and features a variety of rhythmic patterns, including eighth and sixteenth notes, as well as rests. The key signature is one sharp (F#). The score includes a variety of musical symbols, such as clefs, accidentals, and repeat signs.

A musical score consisting of five staves. The first four staves are in treble clef, and the fifth staff is in bass clef. The music is written in a key signature of one sharp (F#) and a common time signature (C). The notation includes various note values such as quarter, eighth, and sixteenth notes, as well as rests and accidentals. The score concludes with a double bar line and repeat dots on each staff.