



49. Pavan: Ploravit.

CANTVS.

Antony Holborne

11

20

28

38

50



49. Pavan: Ploravit.

ALTUS.

Antony Holborne

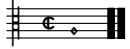
10

19

29

40

49



49. Pavan: Ploravit.

QUINTUS.

Antony Holborne

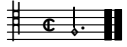
9

20

31

41

51



49. Pavan: Ploravit.

TENOR.

Antony Holborne

Musical score for Tenor part of '49. Pavan: Ploravit.' in common time. The score consists of five staves of music. The first staff begins with a treble clef and a common time signature. The music is written in a key with one flat (B-flat major or D minor). The score includes various rhythmic values such as quarter, eighth, and sixteenth notes, as well as rests and repeat signs. Measure numbers 8, 12, 23, 38, and 51 are indicated at the beginning of their respective staves. The piece concludes with a double bar line and repeat dots.

49. Pavan: Ploravit.

BASSVS.

Antony Holborne

Musical score for Bass part of '49. Pavan: Ploravit.' in common time. The score consists of three staves of music. The first staff begins with a bass clef and a common time signature. The music is written in a key with one flat (B-flat major or D minor). The score includes various rhythmic values such as quarter, eighth, and sixteenth notes, as well as rests and repeat signs. Measure numbers 19 and 39 are indicated at the beginning of their respective staves. A first ending bracket labeled '(1)' is present above the second staff. The piece concludes with a double bar line and repeat dots.

¹Facsimile has an F here.

49. Pavan: Ploravit.

Antony Holborne

9

18

27



36



45



Detailed description: This image shows a page of musical notation for a piece in 3/4 time, marked with a single flat (B-flat). The score is divided into three systems. The first system (measures 27-35) features a melody in the upper voice with a repeat sign and first ending bracket at measure 35. The second system (measures 36-44) continues the melody with various articulations and dynamics. The third system (measures 45-52) shows the melody concluding with a final cadence. The bass line provides harmonic support throughout. Measure numbers 27, 36, and 45 are indicated at the start of their respective systems.

A musical score for five staves, page 53. The score is written in a key signature of one flat (B-flat) and a common time signature (C). The notation includes various note values such as quarter, eighth, and sixteenth notes, as well as rests and accidentals. The piece concludes with a double bar line and repeat dots on each staff.