



43. Amoretta.

CANTVS.

Antony Holborne

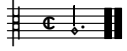
Musical score for the Cantus part of '43. Amoretta.' in G major (one sharp) and common time. The score consists of six staves of music. The first staff begins with a treble clef, common time, and a key signature of one sharp. The music is written in a single melodic line. Measure numbers 7, 17, 26, 34, and 42 are indicated on the left side of the staves. The piece concludes with a double bar line and repeat dots.

43. Amoretta.

ALTUS.

Antony Holborne

Musical score for the Altus part of '43. Amoretta.' in G major (one sharp) and common time. The score consists of five staves of music. The first staff begins with a treble clef, common time, and a key signature of one sharp. The music is written in a single melodic line. Measure numbers 11, 20, 30, and 41 are indicated on the left side of the staves. The piece concludes with a double bar line and repeat dots.



43. Amoretta.

QUINTUS.

Antony Holborne

10
21
31
40

43. Amoretta.

TENOR.

Antony Holborne

11
22
33
42



43. Amoretta.

BASSVS.

Antony Holborne

15

28

38

43. Amoretta.

Antony Holborne

The musical score for 'Amoretta' is presented in five systems, each consisting of five staves. The notation is in common time (C) and features a key signature of one sharp (F#). The first system includes a treble clef on the top staff and a bass clef on the bottom staff. The music is characterized by a mix of eighth and sixteenth notes, with some rests. The second system continues the melodic and harmonic development. The third system introduces a repeat sign (double bar line with two dots) at the beginning of the first staff. The fourth system also features a repeat sign at the start of the first staff. The fifth system concludes the piece with a final double bar line and repeat sign at the beginning of the first staff.

The image displays a page of musical notation for a string quartet, organized into four systems. Each system consists of two treble clef staves and two bass clef staves. The notation includes various note values, rests, and repeat signs. The first system features a melodic line in the upper treble staff and a supporting bass line in the lower bass staff. The second system introduces a repeat sign, indicating a section to be played twice. The third system continues the melodic and bass lines with some chromatic movement. The fourth system concludes the page with a final melodic phrase and a bass line ending on a sustained note.

A musical score consisting of five staves. The top four staves are in treble clef, and the bottom staff is in bass clef. The music is written in a key with one sharp (F#) and a common time signature. The notation includes various note values such as quarter, eighth, and half notes, as well as rests and accidentals. The score concludes with a double bar line and repeat dots on each staff.