



39. Pavan.

CANTVS.

Antony Holborne

Musical score for the Cantus part of '39. Pavan.' by Antony Holborne. The score is written in treble clef with a common time signature. It consists of four staves of music. The first staff begins with a treble clef and a common time signature. The second staff is marked with a '9' at the beginning. The third staff is marked with a '19' at the beginning. The fourth staff is marked with a '29' at the beginning and contains first and second endings, indicated by brackets and the numbers '1.' and '2.'. The piece concludes with a double bar line.

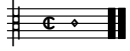
39. Pavan.

ALTUS.

Antony Holborne

Musical score for the Altus part of '39. Pavan.' by Antony Holborne. The score is written in treble clef with a common time signature. It consists of three staves of music. The first staff begins with a treble clef and a common time signature. The second staff is marked with a '12' at the beginning and contains a triplet of notes, indicated by a '(3)' above the notes. The third staff is marked with a '26' at the beginning and contains first and second endings, indicated by brackets and the numbers '1.' and '2.'. The piece concludes with a double bar line.

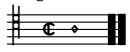
³This note and the following one are a half and a quarter in the facsimile.



39. Pavan.

QUINTUS.

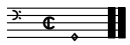
Antony Holborne



39. Pavan.

TENOR.

Antony Holborne



39. Pavan.

BASSVS.

Antony Holborne

¹This and the following two notes are f's in the facsimile.

²This note is editorial, as the facsimile does not include first and second endings.

39. Pavan.

Antony Holborne

The musical score for '39. Pavan.' by Antony Holborne is presented in five staves. The music is in common time (C) and features a mix of treble and bass clefs. The first system (measures 1-9) includes a treble staff with a key signature of one sharp (F#), a second treble staff, a third treble staff, a fourth treble staff, and a bass staff. The second system (measures 10-19) includes a treble staff with a key signature of one sharp, a second treble staff with a key signature of one sharp and a triplet of eighth notes marked '(3)', a third treble staff, a fourth treble staff, and a bass staff. The third system (measures 20-29) includes a treble staff with a key signature of one sharp, a second treble staff with a key signature of one sharp, a third treble staff, a fourth treble staff, and a bass staff. The score concludes with a double bar line and repeat dots at the end of the fifth staff.

30

The image shows a musical score for five staves. The first staff has two first endings (1.) and two second endings (2.). The second staff has a first ending (1.) and a second ending (2.). The third staff has a first ending (1.) and a second ending (2.). The fourth staff has a first ending (1.) and a second ending (2.). The fifth staff has a first ending (1.) and a second ending (2.).