

18. The Sighes.

CANTUS.

Antony Holborne

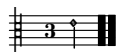
Musical score for the Cantus part of 'The Sighes'. It consists of four staves of music in 3/4 time. The first staff begins with a treble clef and a 3/4 time signature. The music is written in a single melodic line. The second staff is marked with the number 10. The third staff is marked with the number 21. The fourth staff ends with a double bar line and a repeat sign. The key signature has one sharp (F#).

18. The Sighes.

ALTUS.

Antony Holborne

Musical score for the Altus part of 'The Sighes'. It consists of four staves of music in 3/4 time. The first staff begins with a treble clef and a 3/4 time signature. The music is written in a single melodic line. The second staff is marked with the number 9. The third staff is marked with the number 17. The fourth staff is marked with the number 24. The fourth staff ends with a double bar line and a repeat sign. The key signature has one sharp (F#).

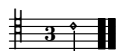


18. The Sighes.

QUINTUS.

Antony Holborne

Musical score for Quintus part of 'The Sighes'. It consists of four staves of music in treble clef, 3/4 time, and one sharp key signature. The first staff starts at measure 1. The second staff starts at measure 9 and contains a repeat sign. The third staff starts at measure 17 and also contains a repeat sign. The fourth staff starts at measure 24 and ends with a double bar line and repeat dots.

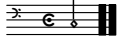


18. The Sighes.

TENOR.

Antony Holborne

Musical score for Tenor part of 'The Sighes'. It consists of four staves of music in treble clef, 3/4 time, and one sharp key signature. The first staff starts at measure 1. The second staff starts at measure 9 and contains a repeat sign. The third staff starts at measure 18 and also contains a repeat sign. The fourth staff starts at measure 25 and ends with a double bar line and repeat dots.



18. The Sighes.

BASSVS.

Antony Holborne

11

21

18. The Sighes.

Antony Holborne

The musical score for "The Sighes" by Antony Holborne is presented in 3/4 time. It consists of 14 staves of music, arranged in two systems of seven staves each. The notation includes various rhythmic values such as quarter, eighth, and sixteenth notes, as well as rests. The key signature is one flat (B-flat). The piece features several repeat signs (double bar lines with dots) and a final double bar line with a repeat sign at the end of the first system. The music is written for a single melodic line, likely a lute or a similar stringed instrument.

The image shows a musical score for five staves. The top four staves are in treble clef, and the bottom staff is in bass clef. The music is written in a key with one sharp (F#) and a common time signature. The notation includes various note values, rests, and accidentals, ending with double bar lines and repeat signs.