

17. Paradizo.

CANTVS.

Antony Holborne

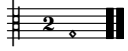
Musical score for the Cantus part of '17. Paradizo.' in common time. The score consists of four staves of music. The first staff begins with a treble clef and a common time signature. The music is written in a single melodic line. Measure numbers 13, 23, and 31 are indicated on the left side of the staves. The piece concludes with a double bar line and repeat dots.

17. Paradizo.

ALTUS.

Antony Holborne

Musical score for the Altus part of '17. Paradizo.' in common time. The score consists of four staves of music. The first staff begins with a treble clef and a common time signature. The music is written in a single melodic line. Measure numbers 11, 22, and 31 are indicated on the left side of the staves. The piece concludes with a double bar line and repeat dots.



17. Paradizo.

QUINTUS.

Antony Holborne

Musical score for Quintus part of '17. Paradizo.' in common time. The score consists of five staves of music. The first staff begins with a treble clef and a common time signature. The music is written in a single melodic line. The score includes measure numbers 13, 23, and 32. The piece concludes with a double bar line and repeat dots.

17. Paradizo.

TENOR.

Antony Holborne

Musical score for Tenor part of '17. Paradizo.' in common time. The score consists of four staves of music. The first staff begins with a treble clef and a common time signature. The music is written in a single melodic line. The score includes measure numbers 11, 22, and 32. The piece concludes with a double bar line and repeat dots.



17. Paradizo.

BASSVS.

Antony Holborne

15

28

17. Paradizo.

Antony Holborne

The image displays a musical score for the piece 'Paradizo' by Antony Holborne. The score is arranged in 14 staves, organized into four systems of four staves each. The first system (staves 1-4) is in common time (C) and features a treble clef on the first staff and a bass clef on the fourth. The second system (staves 5-8) is in cut time (C) and features a treble clef on the first staff and a bass clef on the fourth. The third system (staves 9-12) is in common time (C) and features a treble clef on the first staff and a bass clef on the fourth. The fourth system (staves 13-14) is in common time (C) and features a treble clef on the first staff and a bass clef on the fourth. The music is written in a style characteristic of the 16th-century lute or keyboard repertoire, with a focus on rhythmic patterns and melodic lines. The notation includes various note values, rests, and repeat signs.

A musical score consisting of five staves. The first four staves are in treble clef, and the fifth staff is in bass clef. The music is written in a key signature of one flat (B-flat) and a common time signature (C). The score features a variety of rhythmic values including eighth, quarter, and half notes, as well as rests. The piece concludes with a double bar line and repeat dots on each staff.