



9. Pavan.

CANTVS.

Antony Holborne



9. Pavan.

ALTUS.

Antony Holborne

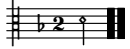
9

19

29

40

b



9. Pavan.

QUINTUS.

Antony Holborne

8

13

26

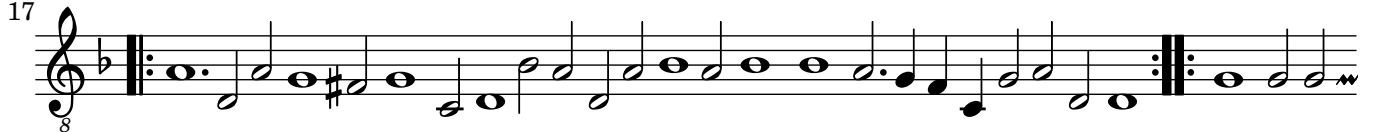
38

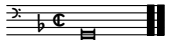


9. Pavan.

TENOR.

Antony Holborne





9. Pavan.

BASSVS.

Antony Holborne



9. Pavan.

Antony Holborne

The image displays a musical score for a piece titled "9. Pavan." by Antony Holborne. The score is organized into two systems, each consisting of five staves. The first system includes a bass line and four treble staves. The second system includes a bass line and four treble staves. The music is written in a key signature of one flat (B-flat) and a common time signature (C). The notation includes various note values such as quarter, eighth, and sixteenth notes, as well as rests and bar lines. The piece concludes with a double bar line and repeat dots at the end of the final staff in each system.

Musical score for a piece in B-flat major, featuring a first and second ending. The score consists of 10 staves: five systems of two staves each. The first system includes a first ending (marked with a double bar line and repeat dots) and a second ending. The key signature has two flats (B-flat and E-flat), and the time signature is 4/4. The notation includes various note values such as quarter, eighth, and sixteenth notes, as well as rests and accidentals.

The image displays ten staves of musical notation. The first five staves are grouped by a brace on the left. Each staff begins with a treble clef, a bass clef, and a key signature of one flat. The notation includes various note values, rests, and repeat signs. The first five staves end with a double bar line and repeat dots. The remaining five staves continue the musical piece without repeat signs.

A musical score consisting of five staves. The first four staves are in treble clef, and the fifth is in bass clef. The key signature is one flat (G minor). The music features a variety of note values including quarter, eighth, and sixteenth notes, as well as rests and accidentals. The first staff ends with a double bar line and repeat dots. The second staff has an 8va marking below the first measure. The third staff has a flat (b) marking above the eighth measure. The fourth staff has an 8va marking below the first measure. The fifth staff is a bass line. All staves end with a double bar line and repeat dots.