

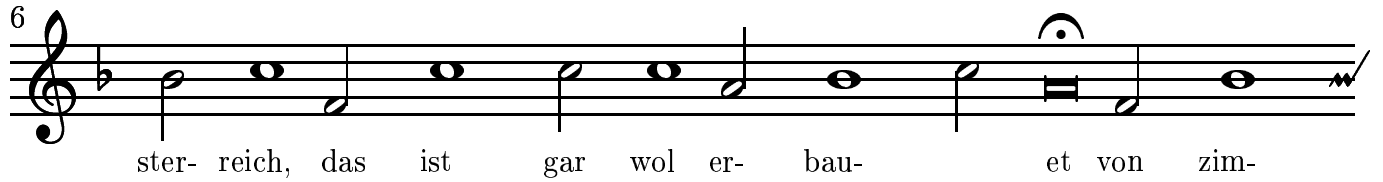
# Es leit ein schloß

Cantus

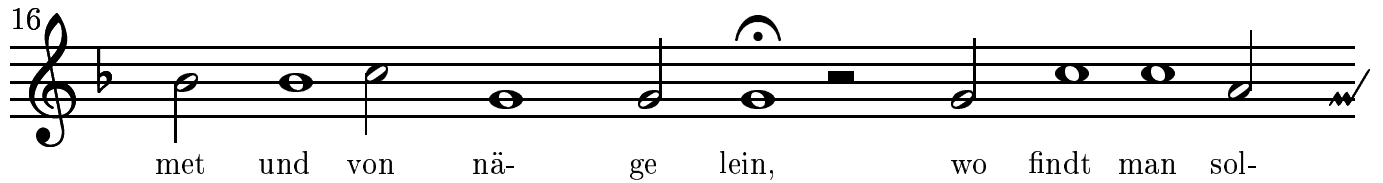
Glogauer Liederbuch, Number 50



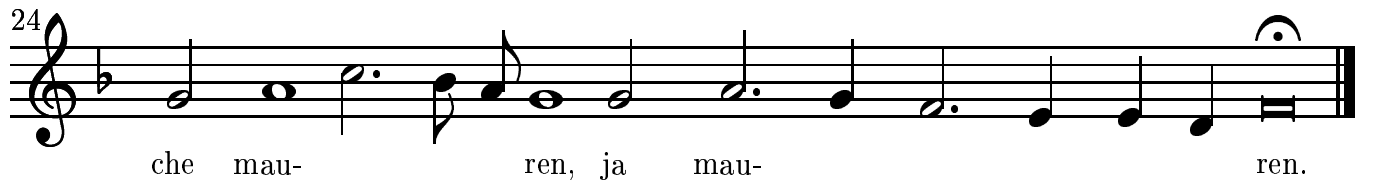
Es leit ein schloß in Ö-



ster-reich, das ist gar wol er-bau-et von zim-



met und von nä-ge lein, wo findt man sol-



che mau-ren, ja mau-ren.

# Es leit ein schloß

Contratenores

*Glogauer Liederbuch, Number 50*

Musical score for Contratenores, consisting of four staves of music in G major. The first staff starts with a treble clef and a common time signature (C), followed by a key signature change to one flat (F major). The piece begins with a double bar line and an 8-measure rest. The melody is written in a simple style with mostly quarter and eighth notes, and some dotted notes. The second staff starts with a measure number '6' and an 8-measure rest. The third staff starts with a measure number '15' and an 8-measure rest. The fourth staff starts with a measure number '24' and an 8-measure rest. The piece ends with a double bar line.

# Es leit ein schloß

Tenores

*Glogauer Liederbuch, Number 50*

Musical score for Tenores, consisting of three staves of music in G major. The first staff starts with a bass clef and a common time signature (C), followed by a key signature change to one flat (F major). The piece begins with a double bar line. The melody is written in a simple style with mostly quarter and eighth notes, and some dotted notes. The second staff starts with a measure number '6' and an 8-measure rest. The third staff starts with a measure number '19' and an 8-measure rest. The piece ends with a double bar line.