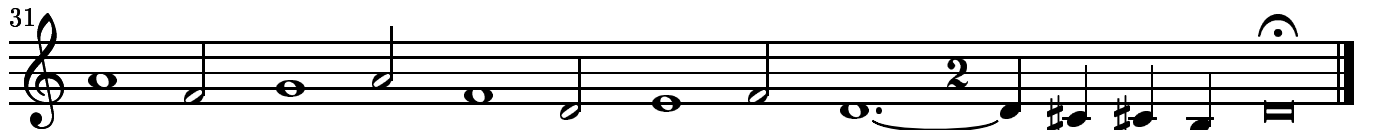
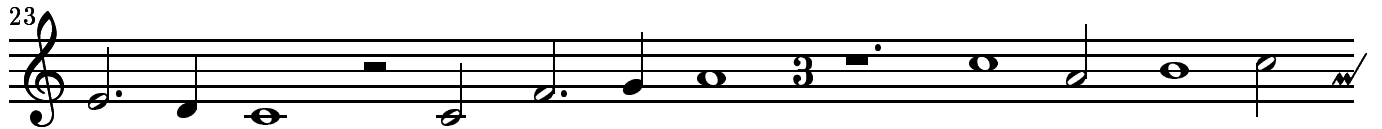


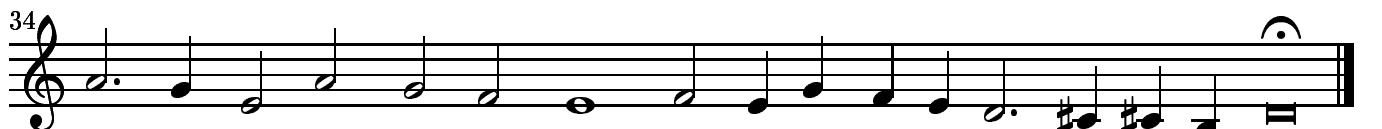
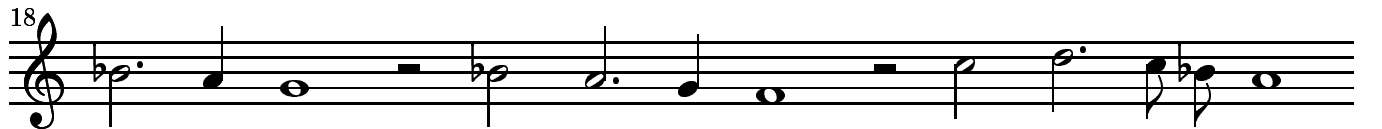
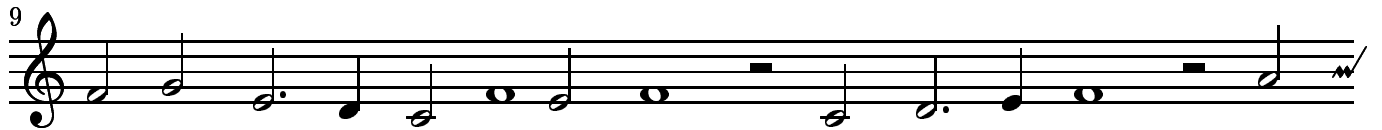
Der Ratten schwanz

Glogauer Liederbuch, Number 113

March 4, 2002



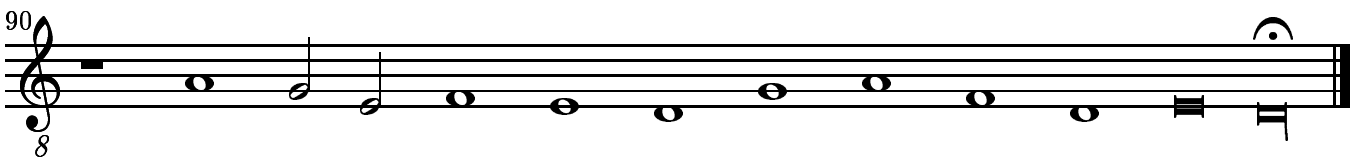
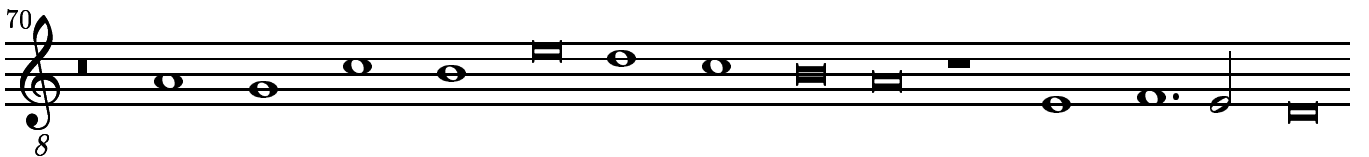
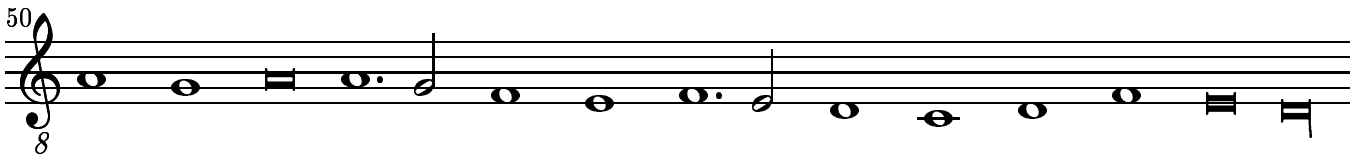
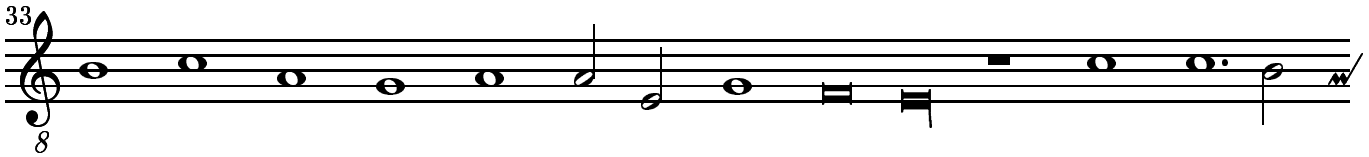
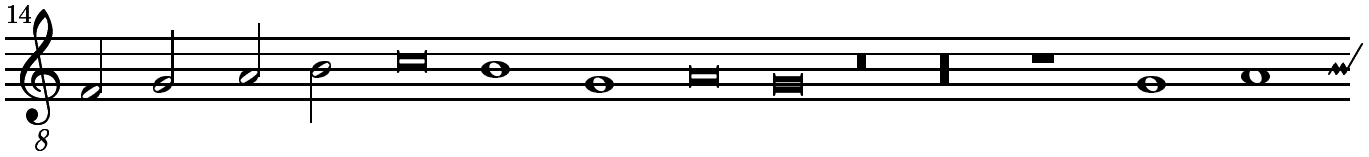
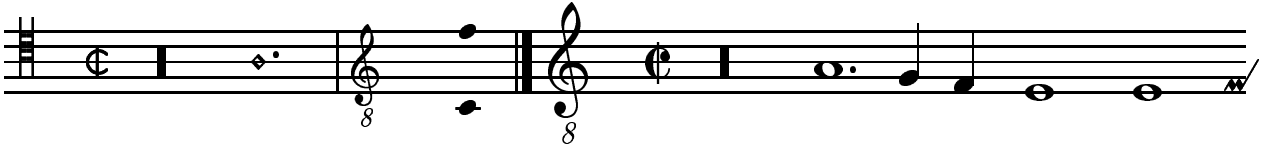
part 3



Der Ratten schwanz

Contratenores

Glogauer Liederbuch, Number 113



part 2

Musical notation for part 2, measures 8-28. The notation is written on a single staff in treble clef with a key signature of one flat (B-flat). The music consists of a sequence of notes and rests, including quarter, eighth, and sixteenth notes, as well as dotted notes and rests. Measure numbers 8, 18, and 29 are indicated at the beginning of their respective lines.

part 3

Musical notation for part 3, measures 9-30. The notation is written on a single staff in treble clef with a key signature of one flat (B-flat). The music consists of a sequence of notes and rests, including quarter, eighth, and sixteenth notes, as well as dotted notes and rests. Measure numbers 10, 21, and 31 are indicated at the beginning of their respective lines.

Der Ratten schwanz

Tenores

Glogauer Liederbuch, Number 113



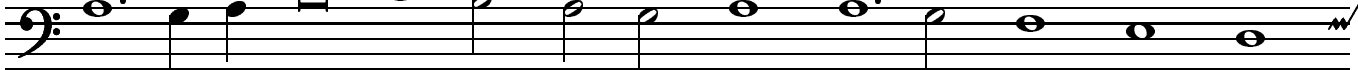
11



26



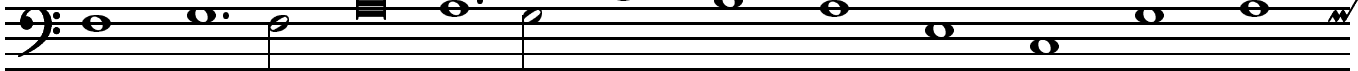
37



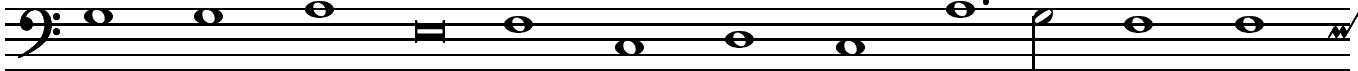
50



60



74



87



Part 2 tacet

Part 3

Musical score for Part 3, measures 1-34. The score is written in bass clef with a common time signature. It consists of five staves of music. The first staff begins with a double bar line and a repeat sign. The second staff is marked with the number 10. The third staff is marked with the number 18. The fourth staff is marked with the number 26. The fifth staff is marked with the number 34 and ends with a double bar line and a fermata over the final note.