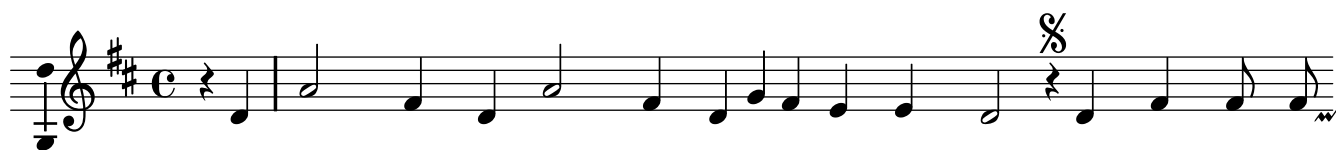


To Portsmouth

A round in 4 parts

From *Pammelia* (1609)

Thomas Ravenscroft



To Ports- mouth, to Ports- mouth it is a gal- lant towne, and there wee will



have a quart of wine with a nut- meg browne, did- dle downe, The gal- lant shippe, the Mer-



maid, the Li- on hang- ing stout, did make us to spend there our sixe- teen pence all out.