



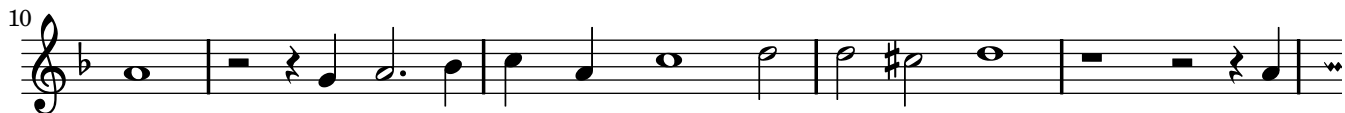
# If that a sinner's sighes be Angel's foode

CANTUS.

John Dowland



If that a sin-ners sighes be An- gels



foode, Or that re-pen-tant teares be An- gels wine, Ac-



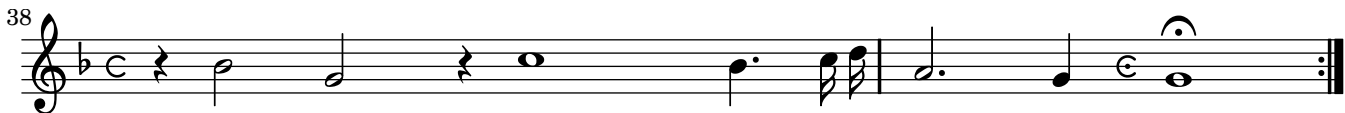
cept O Lord in this most pen- sive moode, These hear-ty sighes and



dole- full plaints of mine, That went with Pe- ter forth most sin- ful-



ly: But not as Pe- ter did,



Weepe, weepe, weepe, weepe bit- ter- ly.



# If that a sinner's sighes be Angel's foode

ALTUS.

John Dowland



If that a sin- ners sighes be An- gels foode, a sin- ners sighes be An- gels



foode, sighes be An- gels foode, Or that re- pen- tant teares re- pen- tant teares be



An- gels wine, be An- gels wine, Ac- cept O Lord, O Lord in this most pen-



sive, pen- sive moode, These hear- ty sighes and dole- full plaints of mine,



That went with Pe- ter forth That went with Pe- ter forth most sin- ful-



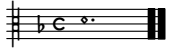
ly: But not as Pe- ter did, not as Pe- ter did, Pe- ter did, weep,



did weepe, weepe, weepe, weepe bit- ter- ly.

<sup>1</sup> Original has a quarter rest before this note.

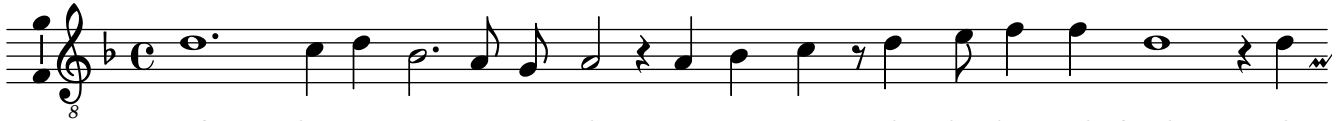
<sup>2</sup> Original has a half note here.



# If that a sinner's sighes be Angel's foode

TENOR.

John Dowland



If that a sin- ners sighes a sin- ners sighes be An- gels foode, sighes



be An- gels foode, Or that re- pen- tant teares, re- pen- tant teares, be



An- gels, An- gels wine, Ac- cept O Lord, Ac- cept O



Lord in this most pen- sive moode, this most, most pen- sive moode, These



hear- ty sighes and dole- full, dole- full plaints of mine, That



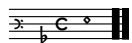
went with Pe- ter forth with Pe- ter forth most sin- ful- ly, sin- ful-



ly: But not as Pe- ter not as Pe- ter did, Pe- ter did, Weepe,



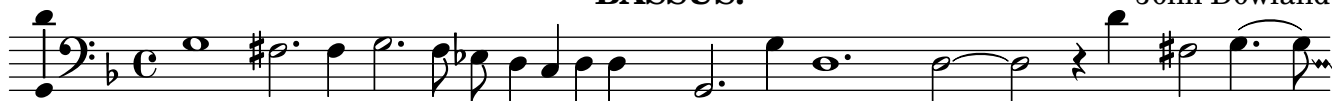
Pe- ter did, weepe, weepe, bit- ter- ly, weepe bit- ter- ly.



# If that a sinner's sighes be Angel's foode

BASSUS.

John Dowland



If that a sin- ners sighes be An- gels foode, sighes be An- gels

10



foode, Or that re- pen- tant teares be An- gels wine, Ac- cept O Lord, O LOrd, Ac-

20



cept O Lord, in this most pen- sive moode, These hear- ty sighes and dole- full

28



plaints of mine, That went with Pe- ter, with Pe- ter forth most sin- ful- ly: But

35



not as Pe- ter, Pe- ter did, Weepe, did weepe did weepe, weepe, bit- ter- ly.