

### 3. Lachrimæ Gementes

Cantus

John Dowland

10

20

29

39 (2) (6)



### 3. Lachrimæ Gementes

Altus

John Dowland

10

20

29 (1) (7)

39

<sup>2</sup> Original has a half note.

<sup>6</sup> Original had half note, half rest (E.H. guess)

<sup>0</sup>This is a half note in the original (Edgar Hunt's guess)

<sup>0</sup>This rest is an E.H. guess



### 3. Lachrimæ Gementes

Tenor

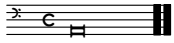
John Dowland

### 3. Lachrimæ Gementes

Quintus

John Dowland

<sup>4</sup> original is half note (E.H. guess)



### 3. Lachrimæ Gementes

Bassus

John Dowland

11

21

30

40 (8)

---

<sup>0</sup> this rest is an E.H. guess.