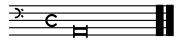


In darkness let me dwell — Cantus

Cantus

John Dowland

In dark- nesse let mee dwell,
 14 The ground, the ground, shall sor- row, sor- row be, The rooffe Dis-
 22 paire to barre all, all cheer- full light from mee, The wals of mar- ble
 30 blacke that moist- ned, that moist- ned still shall weepe, still shall
 38 weepe, My mu- sicke, My mu- sicke hell- ish, hell- ish
 47 jar- ring sounds, jar- ring, jar- ring sounds to ban- ish, ban- ish friend- ly
 53 sleepe. Thus wed- ded to my woes, And bed- ded to my Tombe,
 66 O Let me liv- ing die, O let me liv- ing, let me liv- ing, liv- ing
 73 die, Till death, till death doe come, Till death, till death doe come, till
 78 death, till death doe come, In dark- nesse let mee dwell.



In darkness let me dwell — Bassus

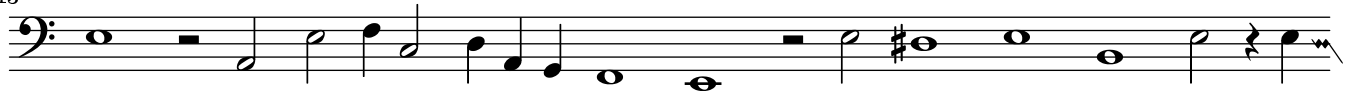
Bassus

John Dowland



In dark- nesse let mee dwell,&c.

13



24



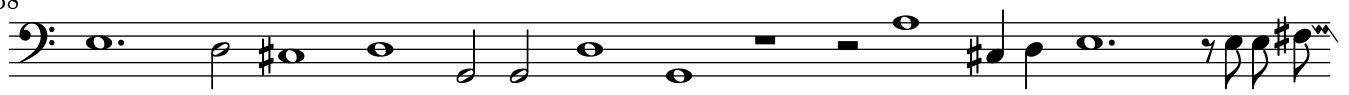
35



46



58



70



79



(6)

⁶ Facsimile has a quarter rest before this half rest, which causes the bass rests to be a quarter note longer than the lute rest and the cantus part.

In darkness let me dwell

Lute

John Dowland

8

In dark- nesse let mee dwell, The

15

ground, the ground, shall sor- row, sor- row be,

21

The roefe Dis- paire to barre all, all cheer- full light from mee, (1)

27

The wals of mar- ble blacke that moist- ned, that moist- ned

35

still shall weepe, still shall weepe, My

41

mu- sicke, My mu- sicke hell- ish, hell- ish

47

jar- ring sounds, jar- ring, jar- ring sounds to ban- ish, ban- ish (5)

52

friend- ly sleepe. Thus wed- ded to my

60

woes, And bed- ded to my Tombe,

67

O Let me liv- ing die, O let me liv- ing, let me liv- ing, liv- ing

73

die, Till death, till death doe come, Till death, till death doe come, till

78

death, till death doe come,

84

In dark- nesse let mee dwell.

⁴ This note inserted by the editor, to make an even number of eighth notes.

¹This might be an F#; I have trouble telling the C's from the E's in tablature, but the E would be normal and the F# would be dissonant.

⁵ Original has this preceded by an A quarter note. There are 21 quarter notes in this "measure" in the lute part, and only 20 in the cantus, so I picked that one to remove.