

5. Lachrimæ Coactæ

Cantus.

John Dowland

⁰Original has the clef on the last two of three lines of this part on the second line, but this seems to just be an error

¹Original is a quarter note



5. Lachrimæ Coactæ

Altus.

John Dowland

10

20

26 (2)

33

41

² Original has E sharp.



5. Lachrimæ Coactæ

Tenor.

John Dowland

8
10
20
29
39

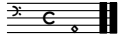


5. Lachrimæ Coactæ

Quintus.

John Dowland

7
14
23
30
39



5. Lachrimæ Coactæ

Bassus.

John Dowland

9

20

28

40