

# XXI. Cleare or cloudie sweet as Aprill showring,

Canto.

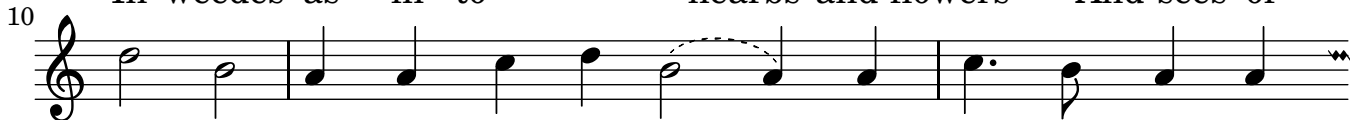
John Dowland



1. Cleare or cloud - ie sweet as A- prill showr-ing,  
 2. Hir grace like June, when earth and trees bee trimde,  
 3. Sweet som- mer spring that breath- eth life and grow -ing,



Smoth or frown-ing so is hir face to mee, Pleasd or  
 In best at - tire of com- pleat beaut - ies height, Hir love a -  
 In weedes as in - to hearbs and flowers And sees of



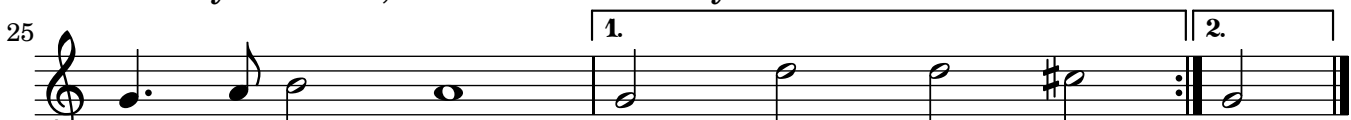
smil - ing like milde May all flowr - ing, When skies blew silke and  
 gaine like som-mers daies bee dimde, With lit- tle cloudes of  
 ser - vice di - vers sorts in sow - ing, Some hap - ly seem-ing



me - dowes car- pets bee, Hir speech- es notes of that night  
 doubt- full con- stant faith, Hir trust hir doubt, like raine and  
 and some be - ing yours, Raine on your hearbs and flowers that



bird that sing - eth, Who thought all sweet yet Jar - ring  
 heat in Skies, Gen - tly thun - der- ing, she light - ning  
 true - ly serve, And let your weeds lack dew and



notes	out	- ring	- eth.	Hir	speech-	es	eth.
to	mine	eies.	Hir	trust	hir	eies.	
due	- ly	sterve.	Raine	on	your	sterve.	



# XXI. Cleare or cloudie sweet as Aprill showring,

Altus

John Dowland



1. Cleare or cloud - ie sweet as A - prill showr - ing,  
 2. Hir grace like June, when earth and trees bee trimde,  
 3. Sweet som-mer spring that breath-eth life and grow - ing,



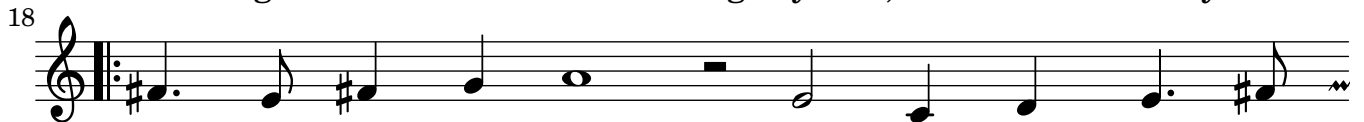
5 Smoth or frown - ing so is hir face to mee, Pleasd or  
 In best at - tire of com - pleat beaut-ies height, Hir love  
 In weedes as in - to hearbs and flow - ers And sees



10 smil-ing like milde May all flowr-ing, When skies blew  
 a-gaine like som-mers daies bee dimde, With lit - tle  
 of ser - vice di - vers sorts in sow - ing, Some hap - ly



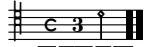
14 silke and me - dowes car - pets bee, Hir speech - es  
 cloudes of doubt - full con - stant faith, Hir trust hir  
 seem - ing and some be - ing yours, Raine on your



18 notes of that night bird that sings, Who thought all  
 doubt, like raine and heat in Skies, Gen - tly  
 hearbs and flowrs that true - ly serve, And let your



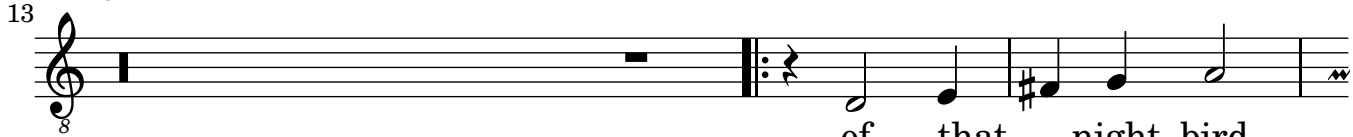
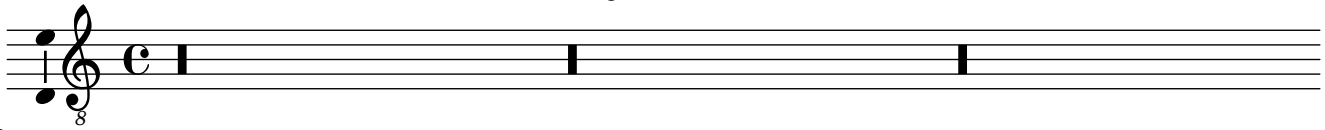
22 sweet yet Jarring notes out - ring-eth. Hir speech-es eth.  
 thundr-ing, she lightning to mine eies. Hir trust hir eies.  
 weeds lack dew and due - ly sterve. Raine on your sterve.



# XXI. Cleare or cloudie sweet as Aprill showring,

Quintus

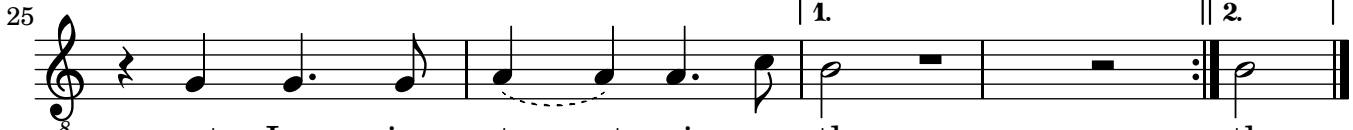
John Dowland



of that night bird  
like raine and  
and flow- ers that



that sing- eth, Who thought all sweet, who thought all sweet,  
heat in Skies, Gen- tly thundr- ing, gen- tly thun- der- ing,  
true- ly serve, And let your weeds, and let your weeds,



yet Jar- ring notes out- ring- eth. eth.  
she light- ning to mine eies. eies.  
lack dew and due- ly sterve. sterve.



# XXI. Cleare or cloudie sweet as Aprill showring,

Tenor

John Dowland



1. Cleare or cloud- ie sweet as A- prill showr- ing,  
 2. Hir grace like June, when earth and trees bee trimde,  
 3. Sweet som- mer spring that breath- eth life and grow- ing,



Smoth or frown- ing so is hir face to mee, Pleasd or  
 In best at- tire of com- pleat beaut- ies height, Hir love  
 In weedes as in- to hearbs and flow- ers And sees of



smil- ing like milde May all flowr- ing, When skies blew  
 a- gaine like som- mers daies bee dimde, With lit- tle  
 ser- vice di- vers sorts in sow- ing, Some hap- ly



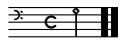
silke, blew silke, and me- dows car- pets bee, Hir speech- es  
 cloudes of doubt- full, of doubt- ful, con- stant faith, Hir trust hir  
 seem- ing, seem- ing, and some be- ing yours, Raine on your



notes of that night bird that sing- eth, Who thought all  
 doubt, like raine and heat in Skies, Gen- tly thundr- ing,  
 hearbs and flow- ers that true- ly serve, And let your weedes



sweet yet Jar- ring notes out- ring- eth. Hir speech- es eth.  
 she light- ning to mine eies. Hir trust hir eies.  
 lack dew and due- ly sterve. Raine on your sterve.



# XXI. Cleare or cloudie sweet as Aprill showring,

Bassus

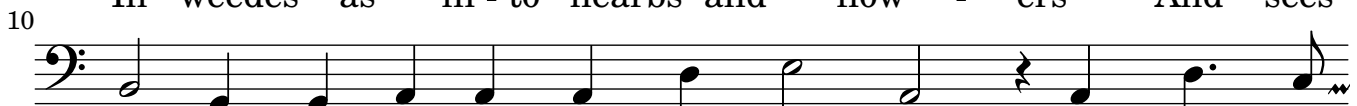
John Dowland



1. Cleare or cloud - ie sweet as A - prill showr - ing,  
 2. Hir grace like June, when earth and trees bee trimde,  
 3. Sweet som - mer spring that breath-eth life and grow - ing,



Smoth or frown - ing so is hir face to mee, Pleasd or  
 In best at - tire of com - pleat beaut - ies height, Hir love  
 In weedes as in - to hearbs and flow - ers And sees



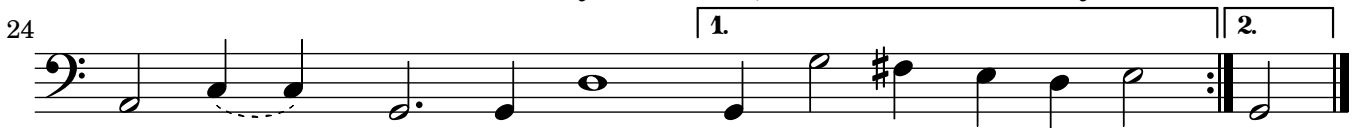
smil - ing like milde May all flowr - ing, When skies blew  
 a - gaine like som - mers daies bee dimde, With lit - tle  
 of ser - vice di - vers sorts in sow - ing, Some hap - ly



(1)  
 silke and me - dows car - pets bee, Hir speech - es notes  
 cloudes of doubt - full con - stant faith, Hir trust hir doubt,  
 seem - ing and some be - ing yours, Raine on your hearbs



of that night bird that sing - eth, Who thought all sweet  
 like raine and heat in Skies, Gen - tly thun - der - ing,  
 and flow - ers that true - ly serve, And let your weedes



yet Jar - ring notes out - ring - eth. Hir speech - es eth.  
 she light - ning to mine eies. Hir trust hir eies.  
 lack dew and due - ly sterve. Raine on your sterve.

<sup>1</sup>Original has a quarter note

# XXI. Cleare or cloudie sweet as Aprill showing,

John Dowland

1. Cleare or cloud - ie sweet as A - prill showr - ing,  
 2. Hir grace like June, when earth and trees bee trimde,  
 3. Sweet som - mer spring that breath - eth life and grow - ing,

1. Cleare or cloud - ie sweet as A - prill showr - ing,  
 2. Hir grace like June, when earth and trees bee trimde,  
 3. Sweet som - mer spring that breath - eth life and grow - ing,

1. Cleare or cloud - ie sweet as A - prill showr - ing,  
 2. Hir grace like June, when earth and trees bee trimde,  
 3. Sweet som - mer spring that breath - eth life and grow - ing,

1. Cleare or cloud - ie sweet as A - prill showr - ing,  
 2. Hir grace like June, when earth and trees bee trimde,  
 3. Sweet som - mer spring that breath - eth life and grow - ing,

Smoth or frown - ing so is hir face to mee, Pleasd or  
 In best at - tire of com - pleat beaut - ies height, Hir love a -  
 In weedes as in - to hearbs and flowers And sees of

Smoth or frown - ing so is hir face to mee, Pleasd or  
 In best at - tire of com - pleat beaut - ies height, Hir love  
 In weedes as in - to hearbs and flow - ers And sees

Smoth or frown - ing so is hir face to mee, Pleasd or  
 In best at - tire of com - pleat beaut - ies height, Hir love  
 In weedes as in - to hearbs and flow - ers And sees

smil - ing like milde May all flowr - ing, When skies blew silke and  
 gaine like som - mers daies bee dimde, With lit - tle cloudes of  
 ser - vice di - vers sorts in sow - ing, Some hap - ly seem - ing

smil - ing like milde May all flowr - ing, When skies blew  
 a - gaine like som - mers daies bee dimde, With lit - tle  
 of ser - vice di - vers sorts in sow - ing, Some hap - ly

smil - ing like milde May all flowr - ing, When skies blew silke, blew silke, and  
 a - gaine like som - mers daies bee dimde, With lit - tle cloudes of doubt - full,  
 ser - vice di - vers sorts in sow - ing, Some hap - ly seem - ing, seem - ing,

smil - ing like milde May all flowr - ing, When skies blew  
 a - gaine like som - mers daies bee dimde, With lit - tle  
 of ser - vice di - vers sorts in sow - ing, Some hap - ly

me - dows car - pets bee, Hir speech - es notes of  
 doubt - full con - stant faith, Hir trust hir doubt, like  
 and some be - ing yours, Raine on your hearbs and

silke and me - dows car - pets bee, Hir speech - es notes of that night  
 cloudes of doubt - full con - stant faith, Hir trust hir doubt, like raine and  
 seem - ing and some be - ing yours, Raine on your hearbs and flowrs that

of that  
 like raine  
 and flow-

me - dows car - pets bee, Hir speech - es notes  
 of doubt - ful, con - stant faith, Hir trust hir doubt,  
 (1) and some be - ing yours, Raine on your hearbs

silke and me - dows car - pets bee, Hir speech - es notes  
 cloudes of doubt - full con - stant faith, Hir trust hir doubt,  
 seem - ing and some be - ing yours, Raine on your hearbs

that night bird that sing - eth, Who thought all sweet yet  
 raine and heat in Skies, Gen - tly thun - der - ing, she  
 flowers that true - ly serve, And let your weeds lack

bird that sings, Who thought all sweet yet Jarring  
 heat in Skies, Gen - tly thundr - ing, she  
 true - ly serve, And let your weeds lack dew

night bird that sing - eth, Who thought all sweet, who thought  
 and heat in Skies, Gen - tly thundr - ing, gen - tly  
 ers that true - ly serve, And let your weeds, and let

of that night bird that sing - eth, Who thought all  
 like raine and heat in Skies, Gen - tly thundr - ing,  
 and flow - ers that true - ly serve, And let your weeds

of that night bird that sing - eth, Who thought all sweet  
 like raine and heat in Skies, Gen - tly thun - der - ing,  
 and flow - ers that true - ly serve, And let your weeds

Jar - ring notes out - ring - eth. Hir speech - es eth.  
 light - ning to mine eies. Hir trust hir eies.  
 dew and due - ly sterve. Raine on your sterve.

notes out - ring - eth. Hir speech - es eth.  
 light - ning to mine eies. Hir trust hir eies.  
 and due - ly sterve. Raine on your sterve.

all sweet, yet Jar - ring notes out - ring - eth. eth.  
 thun - der - ing, she light - ning to mine eies. eies.  
 your weeds, lack dew and due - ly sterve. sterve.

sweet yet Jar - ring notes out - ring - eth. Hir speech - es eth.  
 she light - ning to mine eies. Hir trust hir eies.  
 lack dew and due - ly sterve. Raine on your sterve.

yet Jar - ring notes out - ring - eth. Hir speech - es eth.  
 she light - ning to mine eies. Hir trust hir eies.  
 lack dew and due - ly sterve. Raine on your sterve.