

Chanter ne puis

Discantus

Loyset Compère (1440 - 1518)

Canti B numero cinquante (Venice, 1501/2)

① 2 3

7

14

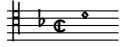
21

25

32

38

44



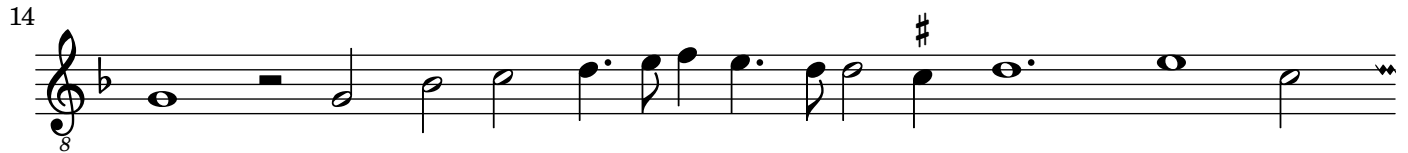
Chanter ne puis

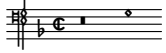
Tenor

Loyset Compère (1440 - 1518)

Canti B numero cinquante (Venice, 1501/2)

1 ② 3





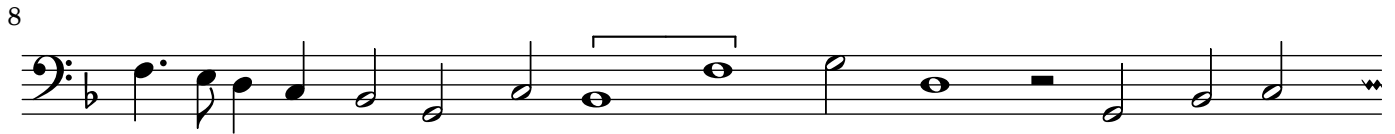
Chanter ne puis

Bassus

Loyset Compère (1440 - 1518)

Canti B numero cinquante (Venice, 1501/2)

1 2 ③



Chanter ne puis

Loyset Compère (1440 - 1518)
Canti B numero cinquante (Venice, 1501/2)

Discantus

Tenor

Contra

8

17

24

31

37

43

This image shows two systems of musical notation. The first system, starting at measure 37, consists of three staves: a treble clef staff with a melodic line, an alto clef staff with a supporting line, and a bass clef staff with a bass line. A slur is placed over the first two staves in measure 37. The second system, starting at measure 43, also consists of three staves. The treble clef staff features a more active melodic line with eighth notes. The alto and bass clef staves provide harmonic support. Both systems conclude with double bar lines.