

# Fantasia tertia.

CANTVS

B. Lupachino.

8 A

17

23 B

29

36

43 (1)

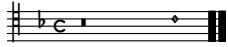
49 C

55

61

69 D

76



# Fantasia tertia.

TENOR.

B. Lupachino.

(3)

A

B

(4)

C

D

10

18

24

30

35

41

48

54

60

67

75

# Fantasia tertia.

B. Lupachino.

<sup>3</sup> My original guess about this smudge was that it was a half rest.

<sup>4</sup>Facsimile has a half note.

The image displays a musical score for guitar, consisting of two systems of six staves each. The music is written in a key with one flat (B-flat) and a 4/4 time signature. The first system begins with a 'C' chord marking above the first staff. The second system features 'D' chord markings above the first and second staves. The notation includes various rhythmic values such as quarter, eighth, and sixteenth notes, as well as rests and dynamic markings. The score concludes with double bar lines at the end of the final two staves.